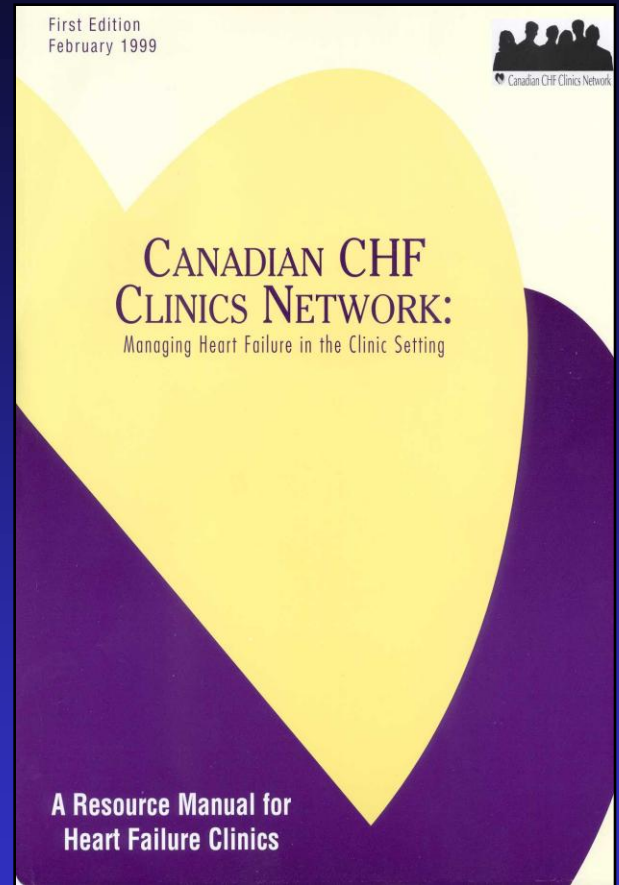




 Canadian CHF Clinics Network

# MANAGING HEART FAILURE IN THE CLINIC SETTING



# CANADIAN HEART FAILURE NETWORK BACKGROUND

## CHRONIC HEART FAILURE:

- Patients present with complex comorbidities and medications
- Close monitoring of outpatients is difficult for many specialists
- Dedicated heart failure clinics exist but not in every community

# **CANADIAN HEART FAILURE NETWORK**

## **OBJECTIVES cont'd**

- To develop/identify tools to monitor the patient's progress
- To develop/identify a benchmarking system to measure patient progress
- To develop/identify a system/tool to measure clinical outcomes
- To create a national HF database

# CANADIAN HEART FAILURE NETWORK

## INITIAL STEPS

- Multidisciplinary HF clinics run by physicians and nurses established in referral centers across Canada
- Care map developed for the management of HF patients in the clinic setting
- Educational curriculum and materials/tools developed for patients and their families
- National longitudinal HF database (Asatte Systems) developed to monitor progress, measure clinical outcomes, provide quarterly benchmarking reports, and promote research

# WHAT CONSTITUTES A HF CLINIC?

- Recognized by MD's as a place to refer patients with heart failure
- Clinic MD should have interest, expertise, and commitment to heart failure
- Nurse involvement is integral to success
- Size of heart failure population and local resources will determine services provided

# HOW TO SET UP A HEART FAILURE CLINIC

## REQUIREMENTS

Interest in HF

chronic disease

elderly

Adequate referral base

Supportive colleagues

Supportive partnership/institution

# HOW TO SET UP A HEART FAILURE CLINIC

## STRATEGIES/IMPLEMENTATION

Analyse your practice, referral base,  
community needs

Start with your strengths

Involve patients and GP's in management

Be responsive and adaptable

Make sure you have an excellent nurse

# HF CLINICS: What Works?

- Choosing the right patient
- Choosing the right staff
- Educating the patient
- Empowering the family physician
- Excellent communication with a shared common treatment plan
- Having and implementing guidelines
- Implementing evidence based therapies
- Benchmarking performance with quality assurance

# CANADIAN HEART FAILURE NETWORK ACHIEVEMENTS

- Multidisciplinary HF clinics established in referral centres across Canada
- Care map developed for the management of HF patients in the clinic setting
- Educational curriculum and materials/tools developed for patients and their families
- National longitudinal HF database (Asatte Systems, Inc., Ottawa, ON) developed to monitor progress, measure clinical outcomes, and provide quarterly benchmarking reports

# CANADIAN HEART FAILURE NETWORK

## SUMMARY

- A Canadian Heart Failure Network has been successfully launched
- New proven therapies are being rapidly assimilated into clinical practice
- Of patients seen, approximately 30% were female, 20% were over 75 yrs, and 15% had LVEF>45%
- Data provide a basis to assess interventions and patient responses in normal clinical ambulatory practice within a range of outpatient clinics across Canada
- Database is flexible to allow new research questions to be asked and to provide proof of the impact of new treatment approaches on outcomes

# CANADIAN HEART FAILURE NETWORK

## FUTURE DIRECTIONS

- Expand network to smaller community hospitals
- Education of referring physicians: new therapies, importance of patient education for their disease, medications and warning signs & symptoms
- Continue to incorporate clinical trials research and enhance linkages with basic science research
- Link with other national cardiovascular databases
- Demonstrate cost-effectiveness of HF clinics
- Improve clinical outcomes of HF patients
- Increase mechanistic understanding of the HF syndrome



# WHO WE ARE

- ♥ **Formation** - Established 1999, incorporated as non-profit September 2004
- ♥ **Committees** - Steering, Database, Advocacy, Research, Education and Nursing
- ♥ **Website** [www.chfn.ca](http://www.chfn.ca) - For communication, networking, research, education and advocacy
- ♥ **Corporate partners** - Unrestricted support
- ♥ **Annual meeting** - Occurs in September at the Annual Meeting of the Heart Failure Society of America
- ♥ **Participants** - Each centre needs at least one physician and one nurse with special training, interest and time dedicated to the treatment and education of patients with heart failure



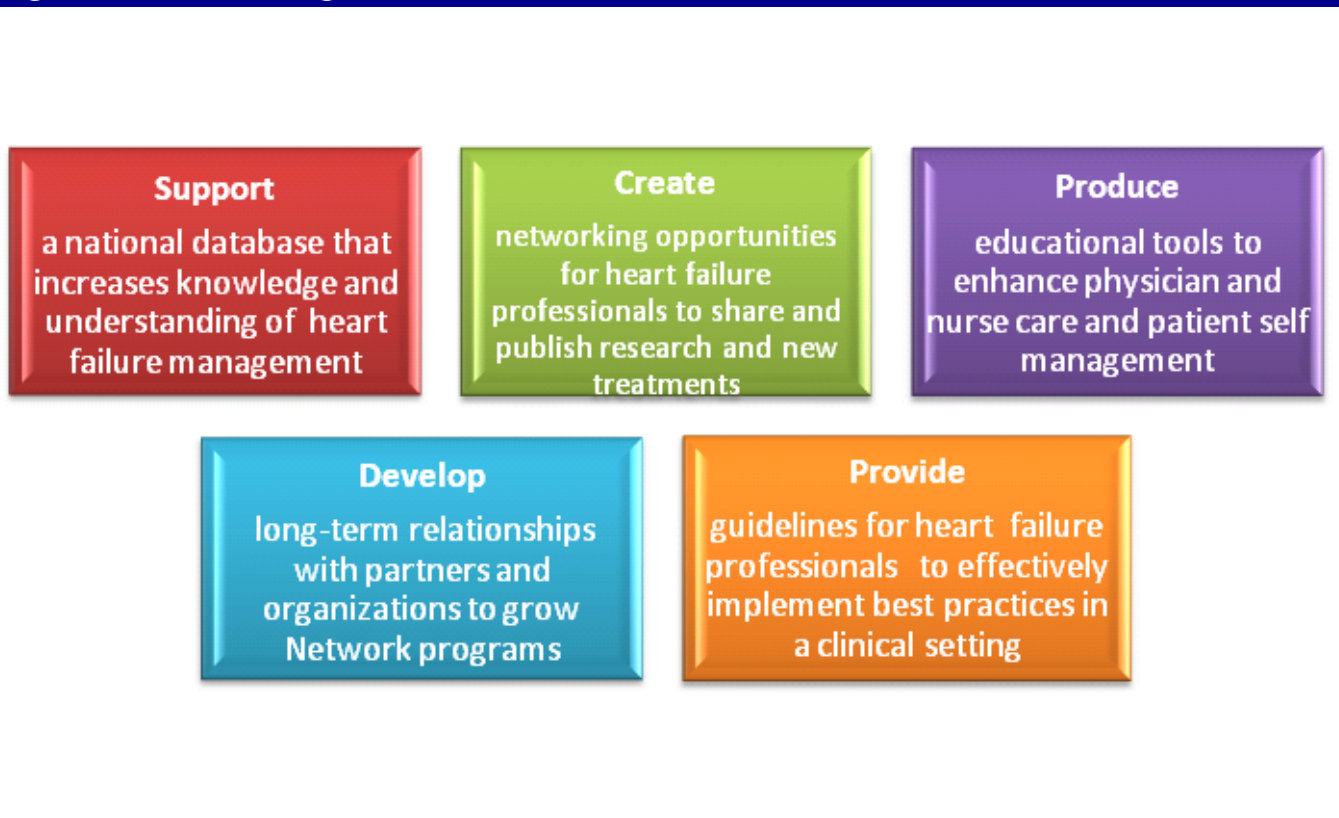
# WHAT WE PROVIDE

- ♥ *Electronic Clinical Database* - Designed for Heart Failure clinics, implemented in each member clinic, national collection patient demographics, treatments and outcomes. Organize and analyze your own centre's data and produce clinic notes to referring physicians.
- ♥ *Quarterly reports* - National and clinic summary data for benchmarking and research
- ♥ *Collaboration* to translate best knowledge and national guidelines into practice
- ♥ *Networking* with like-minded colleagues to improve Heart Failure management and to learn together
- ♥ *Research* opportunities to create new knowledge
- ♥ *Novel educational initiatives* for physicians, nurses, patients and others



# NETWORK OBJECTIVES

The mission of the CHFNR is to improve heart failure care and outcomes in Canada. Specific objectives related to the operations of the Network are critical in supporting and fulfilling this mission





# CONTACT INFORMATION

## Contact Information:

Dr. Malcolm Arnold (Chair, Steering Committee)

Kim Harrison (Executive Director)

University Hospital - London Health Sciences Centre

C6-124D

339 Windermere Road

London, ON N6A 5A5

T: 519-663-3496

F: 519-663-3497

[harriski@lhsc.on.ca](mailto:harriski@lhsc.on.ca)

*Visit website for additional information: [www.chfn.ca](http://www.chfn.ca)*

[www.chfn.ca](http://www.chfn.ca)